

→ Self-service Washing Technology

**HobbyWash**



**WashTec**



## *Top self-service technology for every application.*

- Modular technology for flexible location layout
- Excellent profitability through low operating costs and long maintenance intervals
- Attractive steel structures with five different roofs to choose from
- The perfect solution for all uses: from 1 to 8 positions as a cabinet, rack or container system

## Flexible: The right technology for every location and all requirements.



**NEW!**

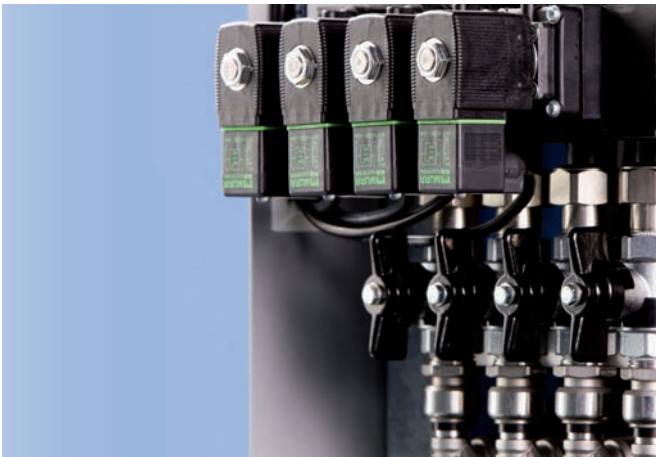
→ The WashMaster: the most economical single-position cabinet solution in the smallest space.



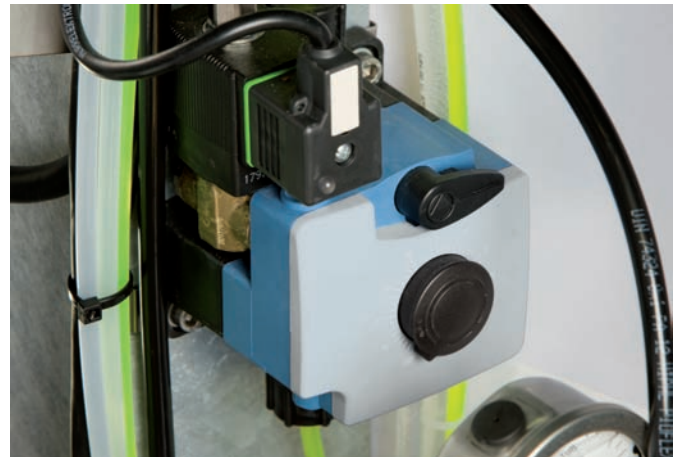
**NEW!**

→ The new 1- to 3-position self-service cabinet in modern styling and state-of-the-art technology makes a success of your carwash business.

## Exact dosing – economical operation



→ Solenoids in a chemical-resistant plastic housing, with stainless steel internal parts, reliably regulate the flow of water.



→ Frequency-controlled, hydraulically-driven pumps dose the chemicals precisely and reliably.

## Washing booth equipment with valuable details



→ The lance insert is modern and practical, and is integrated into the steel structure. There is no need for a separate lance pedestal.



→ More freedom of movement: the special Z shape of the pivoting arms gives you a double 360° range of action for the high-pressure lance and foam brush.

# Modular self-service technology: the right system for EVERY requirement.



## WashMaster – A profitable use of spare space

- Do business in the smallest space. The WashMaster is a cost-efficient, compact system that can be used virtually anywhere: on spare spaces at petrol stations and car showrooms, workshops and supermarkets, or as a self-service module at tunnel or gantry wash facilities.
- The stainless steel housing of the WashMaster contains all the components for the operation of up to 6 different washing programs (shampoo, wax, fresh water and osmosis water with the high-pressure nozzle, foam with the brush).
- Simple operation. Convenient for the customer. The programs are selected via 6 buttons. It is possible to switch between programs at any time. An LED display shows the customer the money inserted and the remaining value. Operation with coins and tokens via the electronic coin tester.



## 1- to 3-position cabinet systems – compactness and convenience in one

- The compactly built cabinet systems, with their small footprint, contain all the components for the operation of up to 3 wash booths. Optional extras, such as an integrated nozzle and brush system, increase convenience for the customer.
- The attractive styling of the Basic and Premium variants emphasises the appeal of the system, with its choice of high-quality stainless steel components.



Illustration shows optional extras



## Multi-bay facilities with 1-8 bays – more capacity for more business.

→ The system of the future that can meet the increasing potential demand at popular locations. Offer your customers a multi-bay facility for rapid, thorough vehicle care with no waiting times.

→ In the rack-system variant for existing rooms, or as a complete container with integrated units, clearly structured, easily accessible and simple to operate.

# Your options for *increasing business*

## Power foam: 2 systems combined in one nozzle

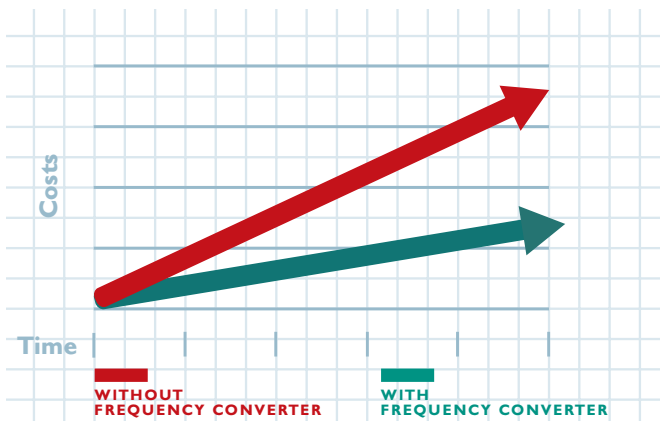


→ Foam is applied on the low pressure setting to loosen dirt.



→ The dirt is then washed away using the same lance on the high pressure setting.

## Economical technology



→ Frequency-converter operation: Reap the benefits of a variable pump speed, and control the pressure and flow of water independent of the wash program. Save water and chemical costs.

## Program options



→ Special programs: Increase turnover by offering special programs for intensive cleaning of rims or removal of insects.

## Remote control



→ Data transfer technology: In the event of a fault, the machine sends a message by modem. Problems can be detected and repaired extremely quickly.

## ProfitManager



→ You can manage one or more systems simply and conveniently with the ProfitManager administration software. Creation of statistics, administration of prices, programming of wash cards and customer administration are only a few of the capabilities that the ProfitManager puts at your disposal.

## Attractive steel structure design to attract customers

→ Washing bays in attractive designs give customers a feeling of high quality and will encourage them to use your self-service car washes. The wide range of design options available allow you to stand out from your local competitors.

In addition, striking colours, advertising signs, accessories and extras can be used to create a custom look. As many elements as you like can be arranged next to each other.

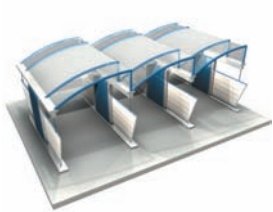
## Attractive steel structure design – lots of room for individual creativity



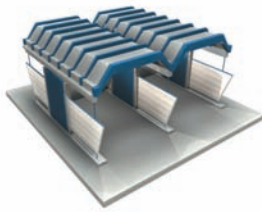
→ The steel structure of the washing bays is available with different roofs and in many different colours.

→ The location can be flexibly laid out, which leaves more potential for new architectural ideas.

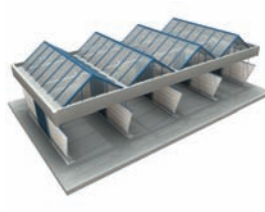
→ The modular design of the self-service steel structure means it can be expanded as necessary. Additional accessories and extras create your own custom look.



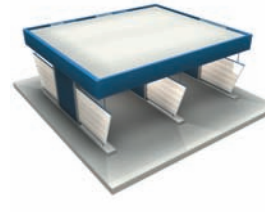
SHED ROOF



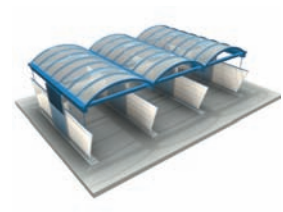
TRAPEZOIDAL ROOF



SADDLE ROOF



FLAT ROOF WITH UPSTAND

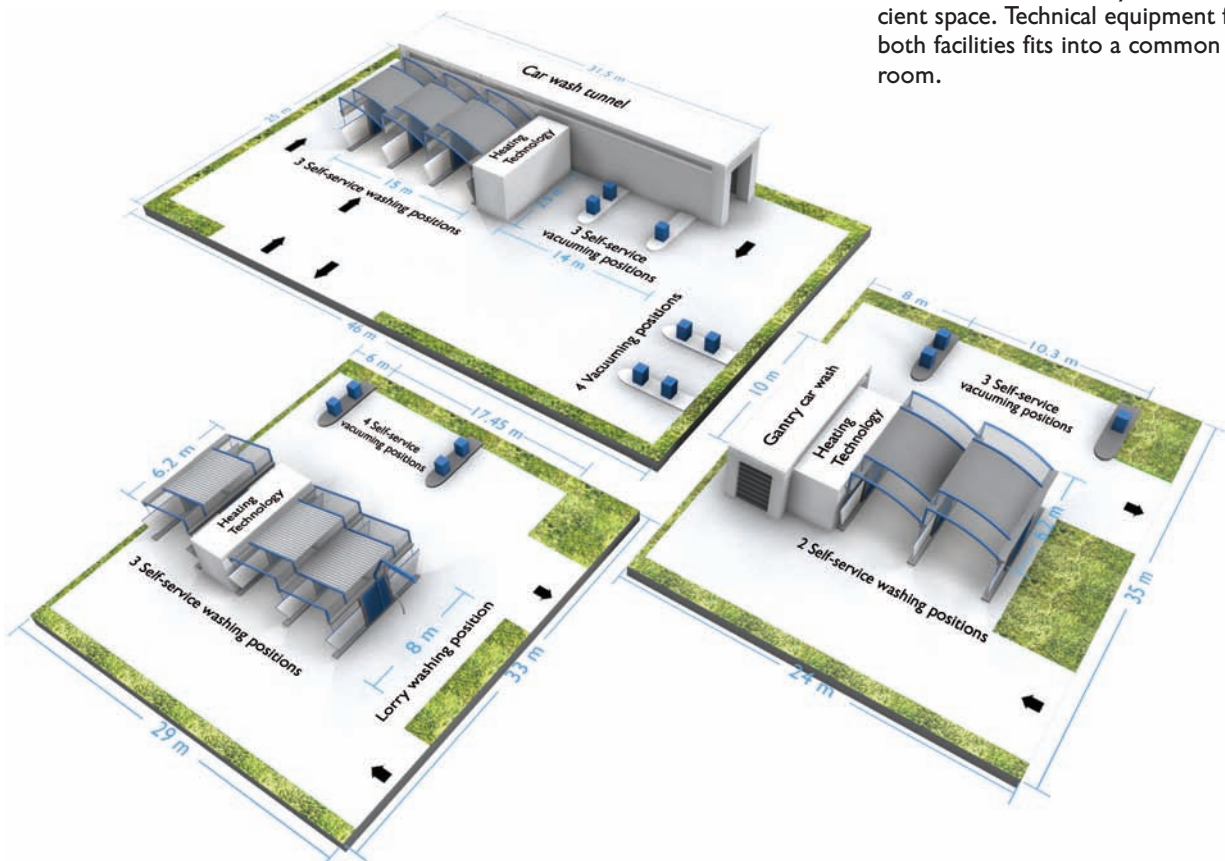


DOMED ROOF

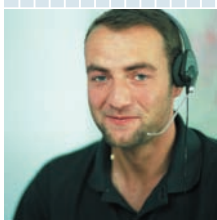
## Designing the right self-service car wash system for every location.

→ WashTec designs the right self-service system for every requirement: from the compact system with up to 4 washing bays to the multi-bay system with 3-8 bays on large sites.

Depending on the location layout, the self-service bays can be closed at the back or designed as drive-through facilities. Even if you already have a brush car wash, you should consider installing a self-service car wash if you have sufficient space. Technical equipment for both facilities fits into a common plant room.



# The "World of WashTec" has everything for your success



- **Comprehensive range:** The right solution for your washing business can always be found.
  - **Roll-over car washes** for low, medium and high washing volumes
  - **Conveyor tunnel systems** with modular design for all sizes and all requirements
  - **Commercial vehicle washes** for washing companies and in-house requirements
  - **Self-service washing equipment** with modular design for all needs and different location sizes
  - **Water treatment** – chemical-free and environmentally friendly
  - **WashTec chemicals** – Cleaning and care products for all car washes
- **Rapid service** 250 engineers in the field throughout Germany – **always in your neighbourhood.**
- **Customized financing plans:** We will promote your business at fair conditions.
- **Reliable experience:** Innovative car washing technology for more than 40 years. **More than 2 million cars are cleaned in WashTec washing facilities every day.**
- **Value for money services:**
  - **Site analysis** for optimum sizing of your business
  - **Cost-effectiveness calculations** help with your planning
  - **Sales training for staff** increases revenue
- **Tested quality** EN ISO 9001, 14001 certification – for your safety