

→ Physical Water Recycling

**AquaX<sup>®</sup>**



 **WashTec**

# *AquaX<sup>®</sup> – optimised filter concept for clean process water.*



**Technology with advantages.  
Perfect details  
for a perfect system:**

- The quality of water obtained complies with the requirements for car washing and excess water disposal in every aspect
- High filter capacity of 4 m<sup>3</sup>/h
- Virtually 100% water recovery
- Without chemicals and fully automatic
- Space-saving thanks to versatile installation of the components
- Suitable for small machine rooms
- Especially easy to use and low on maintenance
- High-grade materials and components for extremely long service life

# AquaX® – economical water reclaim system.

## → AquaX® – chemical-free and economical water reclaim system.

In daily use, the system requires practically no maintenance and is easy to operate. Thanks to the versatile installation options it offers due to its modular design, the AquaX® system is also ideal for small machine rooms.

## → Water recycling without flocculants.

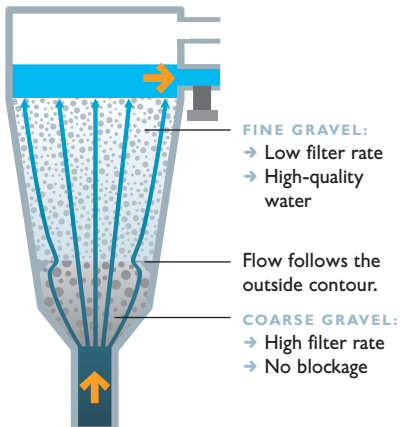
Making full use of the entire gravel bed in line with the flow prevents the filter from becoming blocked. A high flow rate during the reverse flow cycle produces a powerful agitating action, which easily breaks up clumps of wax.

## → Filter regeneration without fresh water.

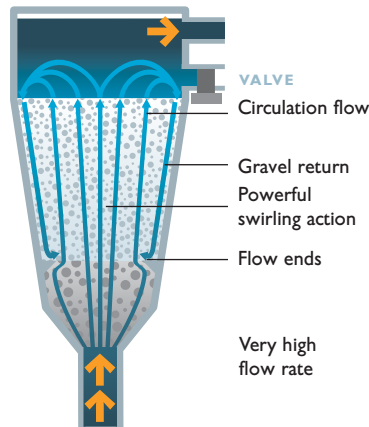
At any given time, one filter is being cleaned by means of automatic reverse flow whilst the other filter, supplemented by water from the process water storage tank, is busy meeting your demands. This means that you should not need to add fresh water, even during regeneration.

## The technique. Thinking ahead for greater effectiveness.

Filtering



Reverse Flow



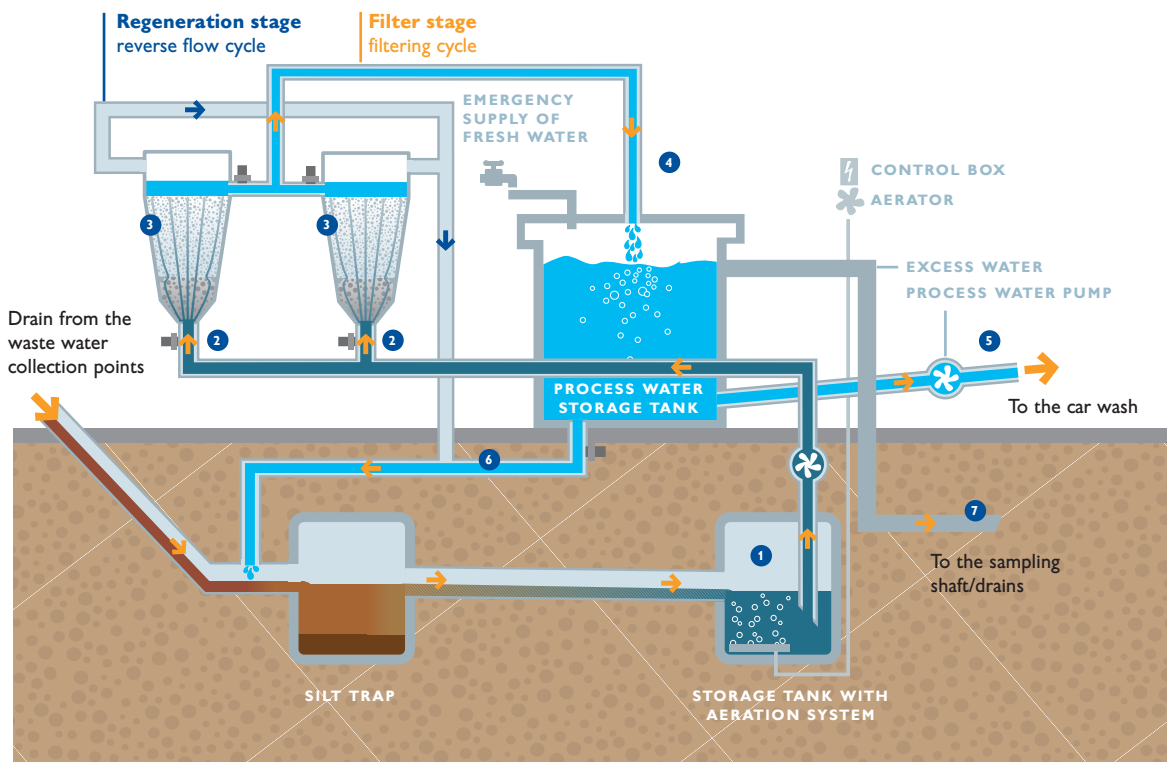
→ The main elements of the AquaX® system are two conical filter tanks.

→ This conical shape permits a constantly decreasing flow rate that produces outstanding deep filter results.

→ The principle involves allowing the dirty water to flow through a layer of gravel and subsequently more slowly through a layer of sand above it.

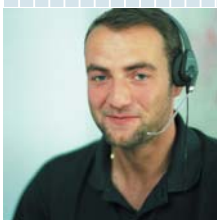
→ Both the coarse gravel and fine sand ensure that particles larger than 50 µm are filtered out.

## The filtering cycle.



- 1 The waste water flows through a silt trap into a storage tank with an aeration system that effectively prevents odour.
- 2 The pre-cleaned water is pumped through two parallel filters.
- 3 The water flows through one coarse and one fine gravel layer.
- 4 Now free of any particles, the water flows into the process water storage tank.
- 5 The cleaned water is pumped from the storage tank to the car wash.
- 6 Any water that is not required is returned to the circulation pipes.
- 7 Excess water is disposed of by discharging it into the drains.

# The “World of WashTec” has everything for your success.



- **Comprehensive range:** The right solution for your washing business can always be found.
  - **Roll-over car washes** for low, medium and high washing volumes
  - **Conveyor tunnel systems** with modular design for all sizes and all requirements
  - **Commercial vehicle washes** for washing companies and in-house requirements
  - **Self-service washing equipment** with modular design for all needs and different location sizes
  - **Water treatment** – chemical-free and environmentally friendly
- **Rapid service** 250 engineers in the field throughout Germany – **always in your neighbourhood.**
- **Customized financing plans:** We will promote your business at attractive conditions.
- **Reliable experience:** Innovative car washing technology for more than 40 years. **More than 2 million cars are cleaned in WashTec washing facilities every day.**
- **Value for money services:**
  - **Site analysis** for optimum sizing of your business
  - **Cost-effectiveness calculations** help with your planning
  - **Sales training for staff** increases revenue
- **Tested quality** EN ISO 9001, 14001 certification – for your safety.